

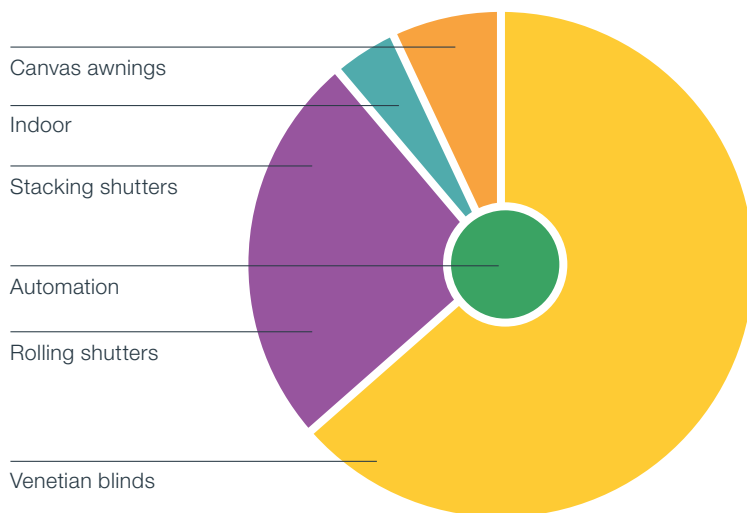
# INNOVATIVE SHADING SOLUTIONS



INNOVATION, QUALITY AND RELIABILITY  
**SINCE 1956**

## Our products

« The products we distribute are always greatly appreciated by our clients because we are constantly innovating. We apply numerous quality controls, and we put our employees at the centre of our activities. »



### Venetian blinds

- » Toustemps 90 and 70 mm
- » Wave 88 PG
- » Wave Lock 88

### Rolling shutters

- » Stavia-micro
- » Stavia compact

### Stacking shutters

- » Stavia-pac

### Canvas awnings

- » Articulated arms
- » Vertical descent
- » Black-out
- » Terrace cover

### Indoor

- » Vertical slats
- » Rollers
- » Pleated
- » Slats 16–25 and 35 mm

### Aluminium structures

- » Pergolas
- » Sectional door



Each of our products can, of course, be motorised and can operate through radio remote control or be controlled by a light sensor, programmable time clock, or similar device either individually or generally.



## 60 years of innovation

**LAMELCOLOR SA is a family-run company, active in the development, manufacture and installation of blinds and sun protection.**

Offering products and services of irreproachable quality is fundamental in the way we conduct our business. Our commitment to delivering the best is reflected at every stage, from receiving an order to delivery.

We respond without hesitation to market requirements and the needs of our clientele.

**Welcome to our home.**



### Lamelcolor SA

**We are a dynamic company, working nationally, to provide a wide range of products and services. We are continually innovating to meet the needs of our customers.**

#### **We offer:**

- Manufacture and marketing of Venetian blinds and rolling shutters
- Installation and assembly of blinds and shutters of all kinds
- Repair and maintenance of all types of blinds and shutters
- Constant innovation with new products to meet the needs of our clients

### Yesterday

**Since 1956, we have never ceased to expand our range of products, while guaranteeing their quality and reliability.**

We offer a rigorous service combined with a constant concern for the development of our products. This passion for our profession contributes to maintaining our reputation. Moreover, meeting our customers' requirements has always been our primary objective.

### Today

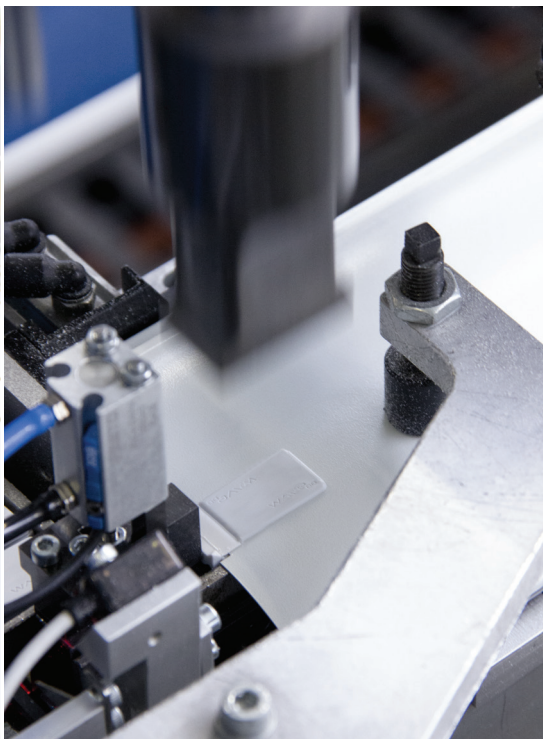
We have more than 100 employees and manufacture more than 200 blinds every day.

Every year, our installation teams install almost 50,000 sun protection systems. Our growth is continuous and profitable.

**Currently, we are the largest awning manufacturer in French-speaking Switzerland.**

# A palette of professions

« Here at Lamelcolor we have more than 15 professions divided into 30 trades. Surrounded by the most efficient and effective technologies, we work in spacious, functional and well-lit premises. Assets that are reflected in the quality of the products that leave our warehouses. »



## A multidisciplinary team

The diversity of trades and the wealth of knowledge our employees possess are what enable us to master all aspects of our business.

We carry out all our research, management, consulting, production and assembly in-house. Our clients and partners know who we are, and we maintain a special relationship with them based on trust.

To maintain this knowledge, we provide ongoing training, which can be external or internal depending on specific needs. We are a training company. Every year, we recruit apprentices into various trades: business employee, automation technician, industrial equipment builder and polybuilder.

## After-sales service

**We offer two maintenance service models for clients:**

- Intervention within the framework of the guarantee
- Ad hoc intervention at the request of our clients for all repair services, immediate or deferred, as well as for the partial or complete replacement of products that have become obsolete.

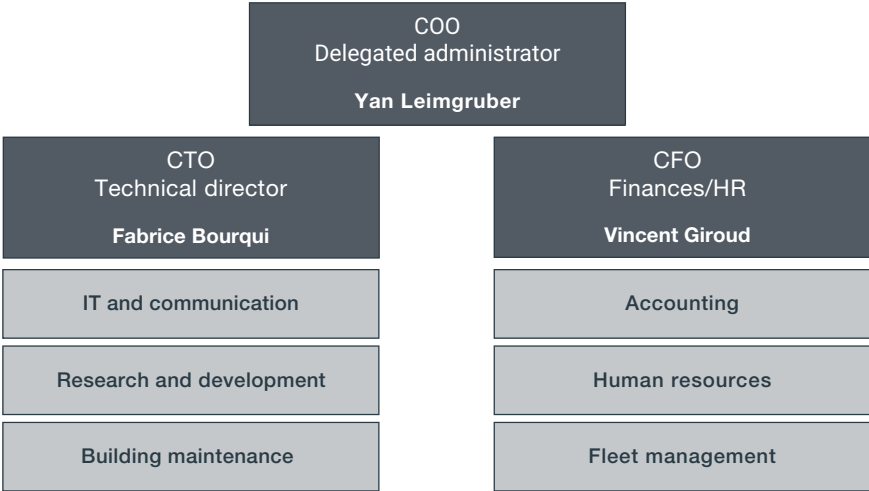
**Direct telephone: +41 (0)587 268801**  
**Intervention within the framework of maintenance.**

## Company structure

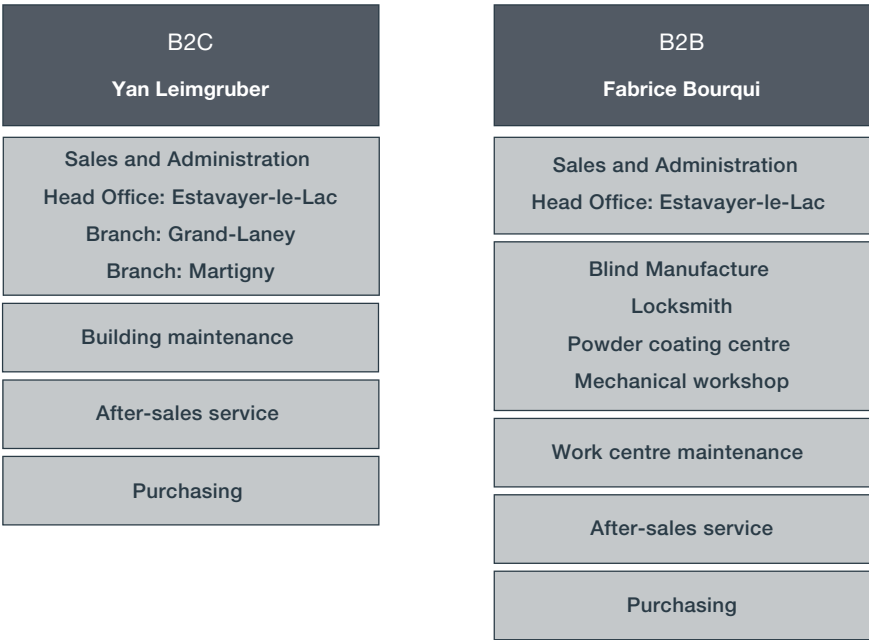
DIRECTION	4
ADMINISTRATIVE STAFF	15
PROJECT MANAGERS	11
PRODUCTION STAFF	50
POLY-BUILDERS	30



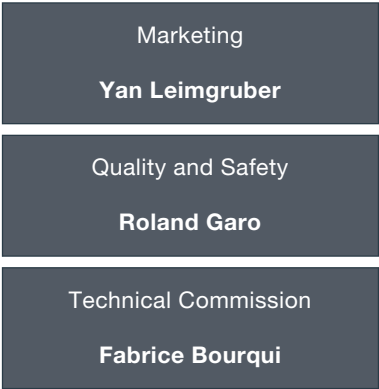




DIRECTION



SECTIONS



SHARED

**COMPANY NAME** LAMELCOLOR SA  
**IDE** CHE-105.962.651  
**ADDRESS** Rte de Lully 35  
Case postale (P.O. Box)  
1470 Estavayer-le-Lac  
**TELEPHONE** +41 (0)587 268800  
**TELEFAX** +41 (0)587 268810  
**EMAIL** info@lamelcolor.ch  
**LEGAL STRUCTURE** Public limited company  
**CAPITAL** CHF 500'000.00

JURA

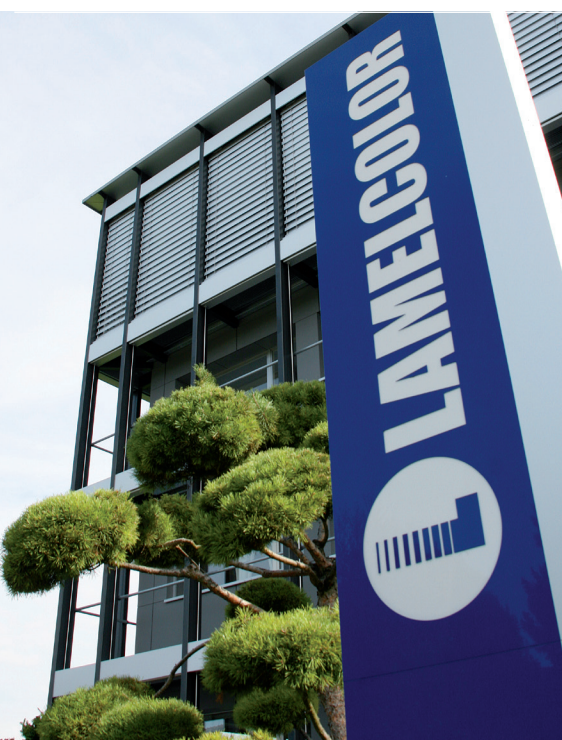
NEUCHÂTEL

FRIBOURG

VAUD

GENEVA

VALAIS



**Liability insurance** La Mobilière - 1470 Estavayer-le-Lac  
Police N° G-1212-3273  
Sum insured CHF 5,000,000.00 per insurance  
year for all insured personal injuries, property  
damage and damage prevention costs.

**Banking relationships** Banque Cantonale de Fribourg,  
Fribourg CH48 0076 8151 0090 1420 7  
Crédit Suisse, Fribourg  
UBS, Fribourg

**VAT** CHE-105.962.651

**Swiss professional associations** ASR: Association of manufacturers and suppliers of  
blinds and awnings  
VSR: Association of suppliers of sun and weather  
protection systems.

**Collective agreement** Union Suisse du Métal (USM)

**SIA Standards**

118 / 342

**Attestations  
of payment**

We regularly and punctually settle all AHV/IV/EO  
payments and Suva contributions as well as those  
stipulated in the collective agreements.

The same applies to payments relating to tax and VAT  
charges. We can produce the relevant documents  
quickly and on request.

**AVS/AI/APG**

CIFA, Fribourg

**AC**

CIFA, Fribourg

**Family allowances**

Cafal, Fribourg

**Provident fund**

Profond

**Accident insurance**

SUVA

**Fabrication-Administration**

Route de Lully 35  
1470 Estavayer-le-Lac  
T : +41 (0)587 268800  
F : +41 (0)587 268810

**Geneva**

Route des Jeunes 93  
1212 Grand-Lancy  
T : +41 (0)587 268800  
F : +41 (0)587 268810

**Martigny**

Rue de l'Ancienne-Pointe 30  
1920 Martigny  
T : +41 (0)587 268800  
F : +41 (0)587 268810

www.lamelcolor.ch  
info@lamelcolor.ch

TVA n° CHE-105.962.651